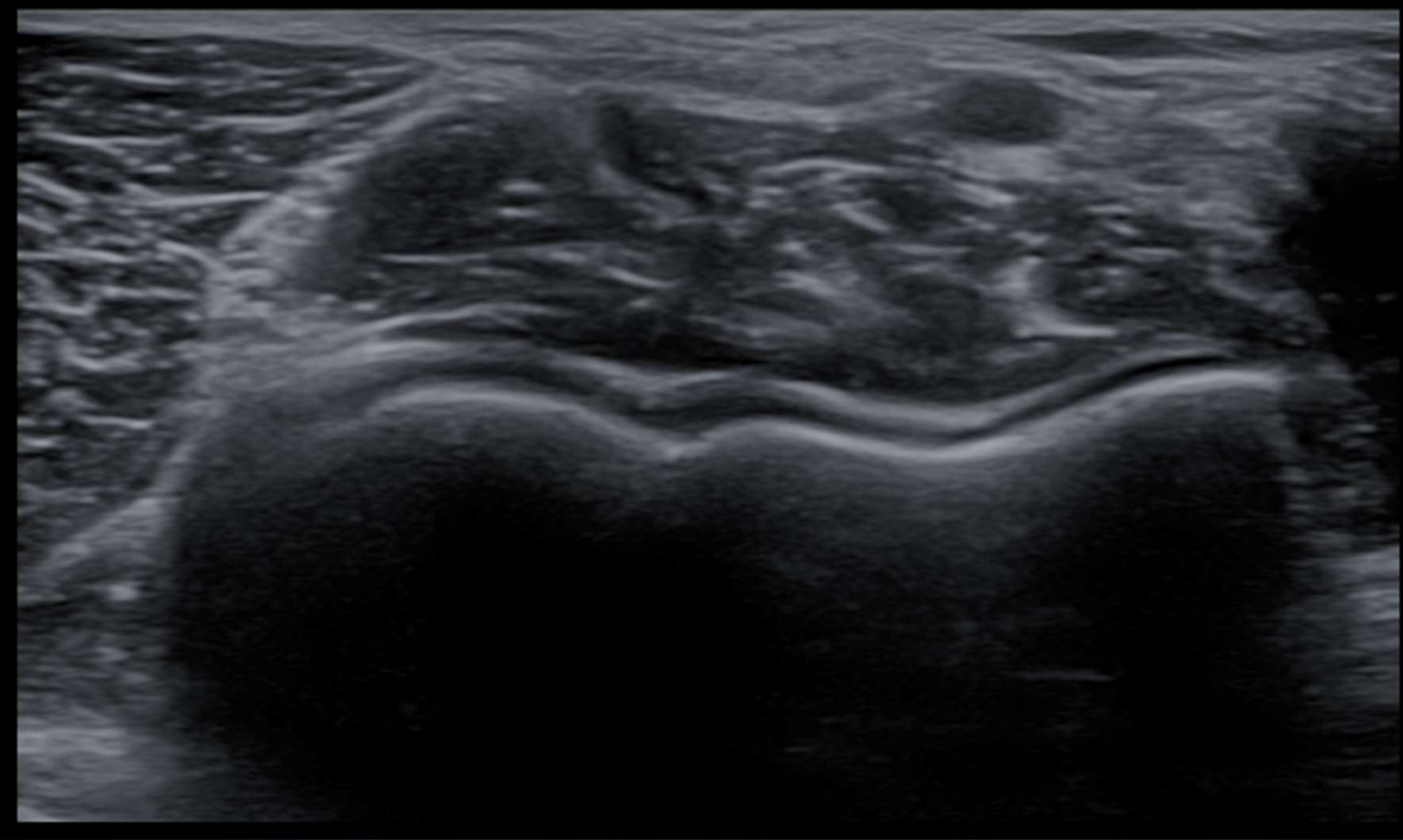
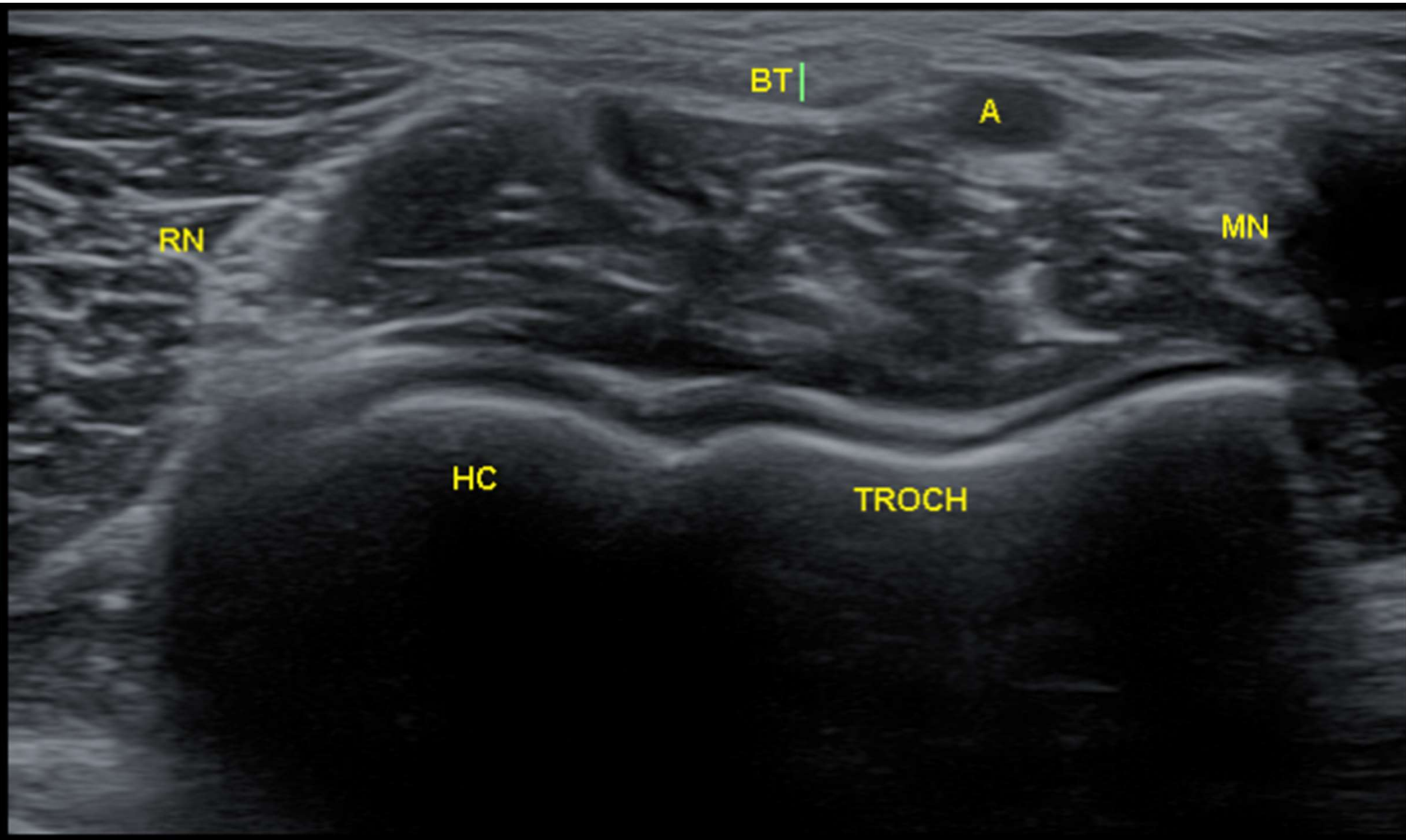
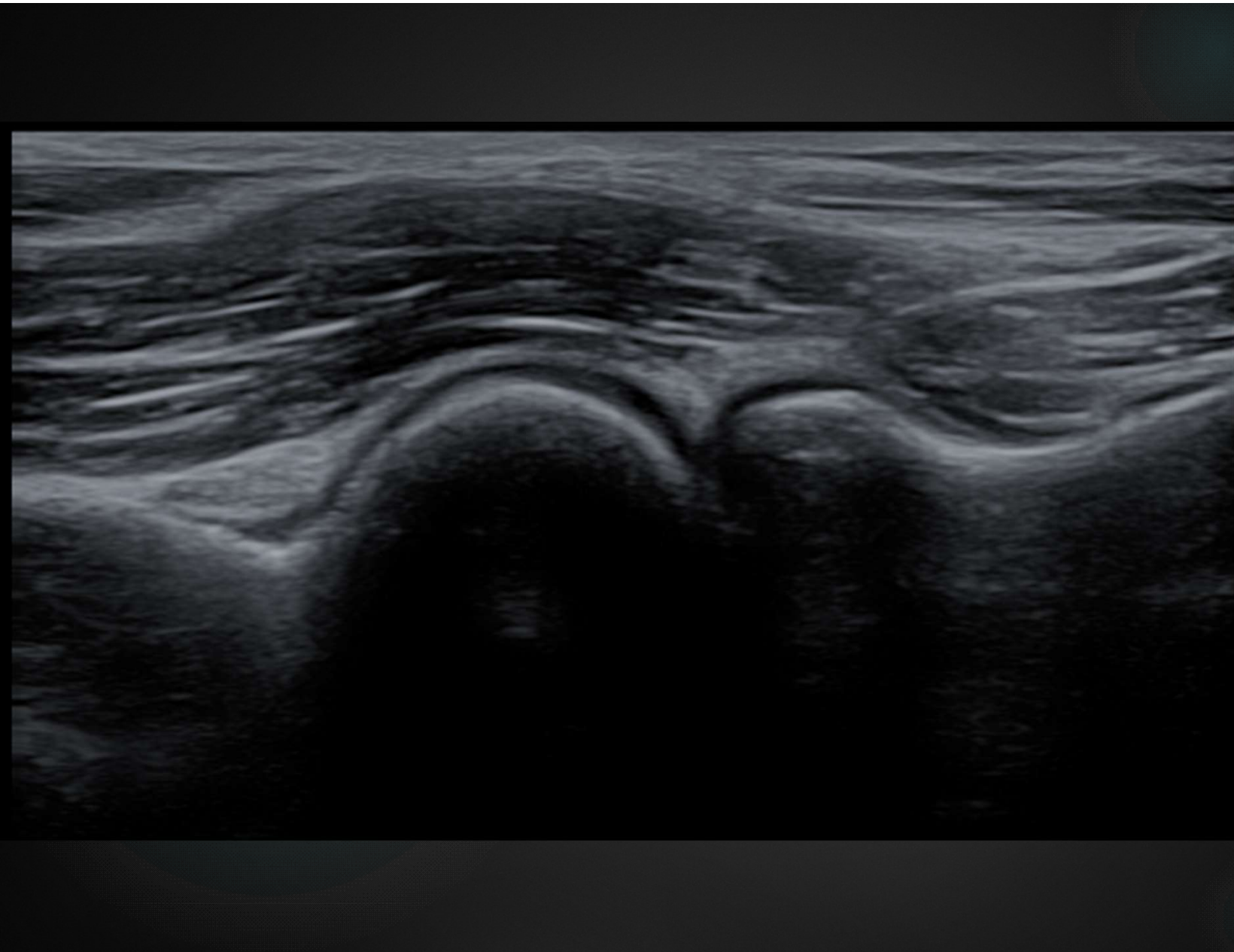


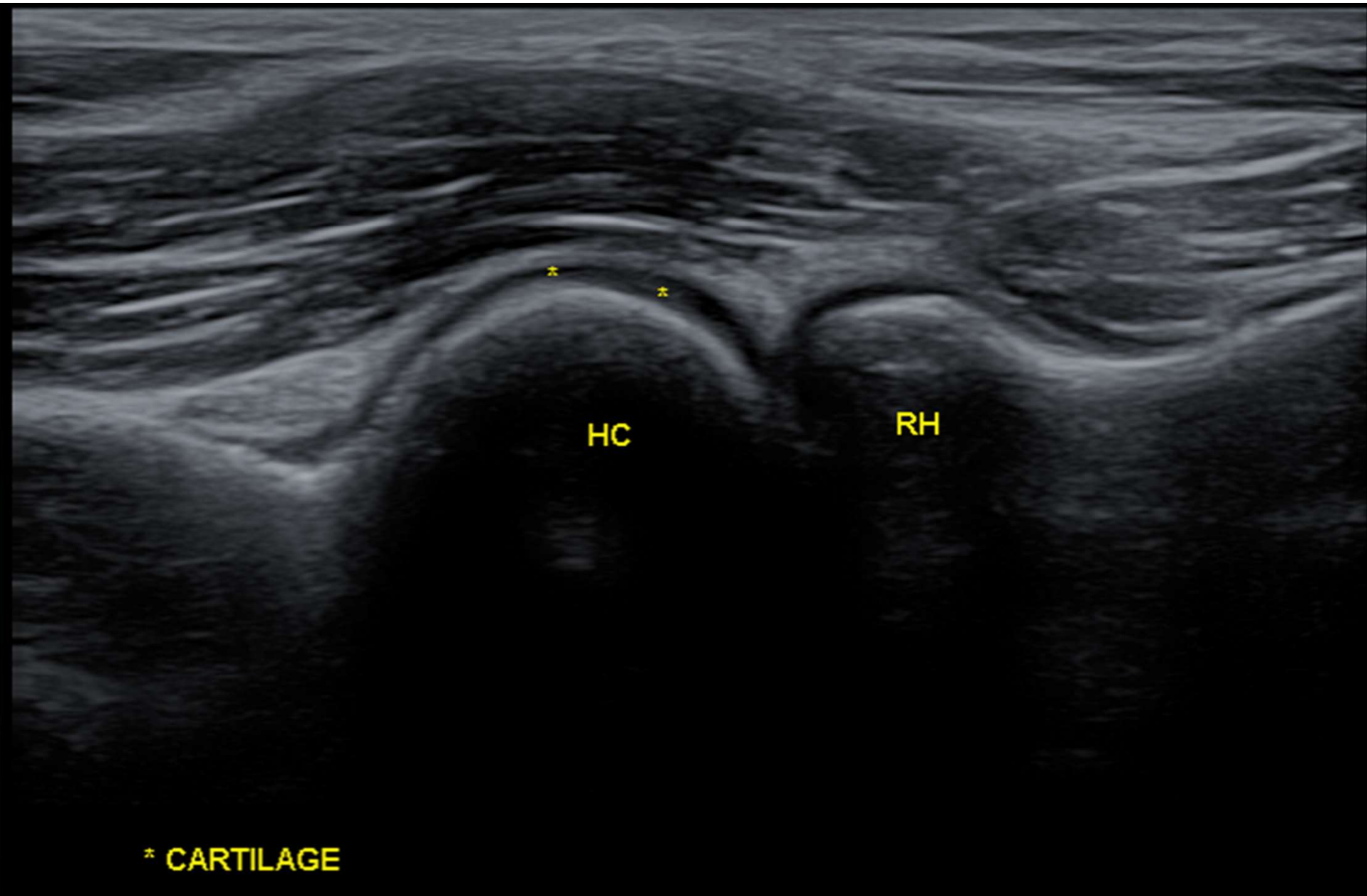
Łokieć technika badania

TOMASZ POBOŻY

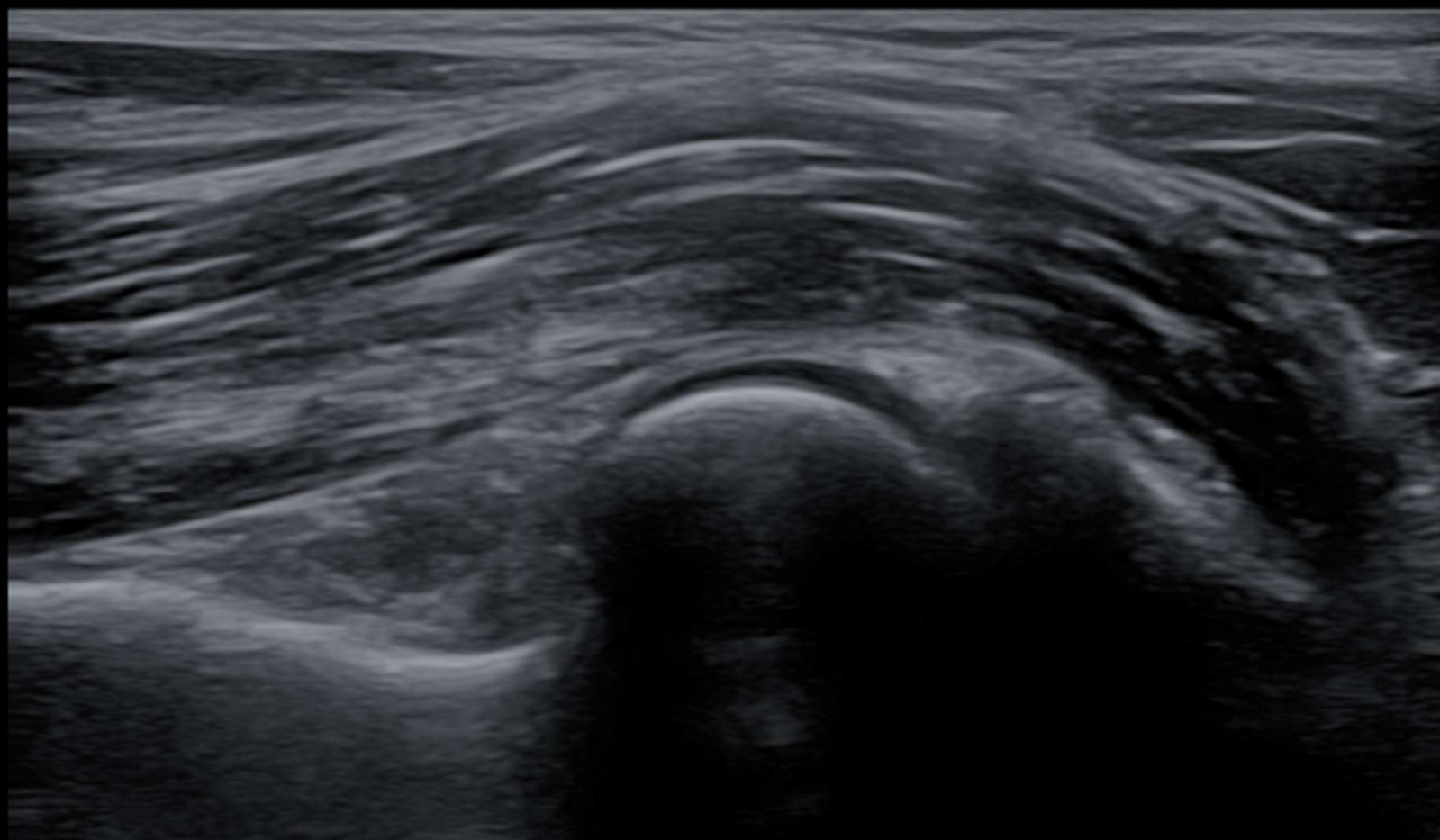


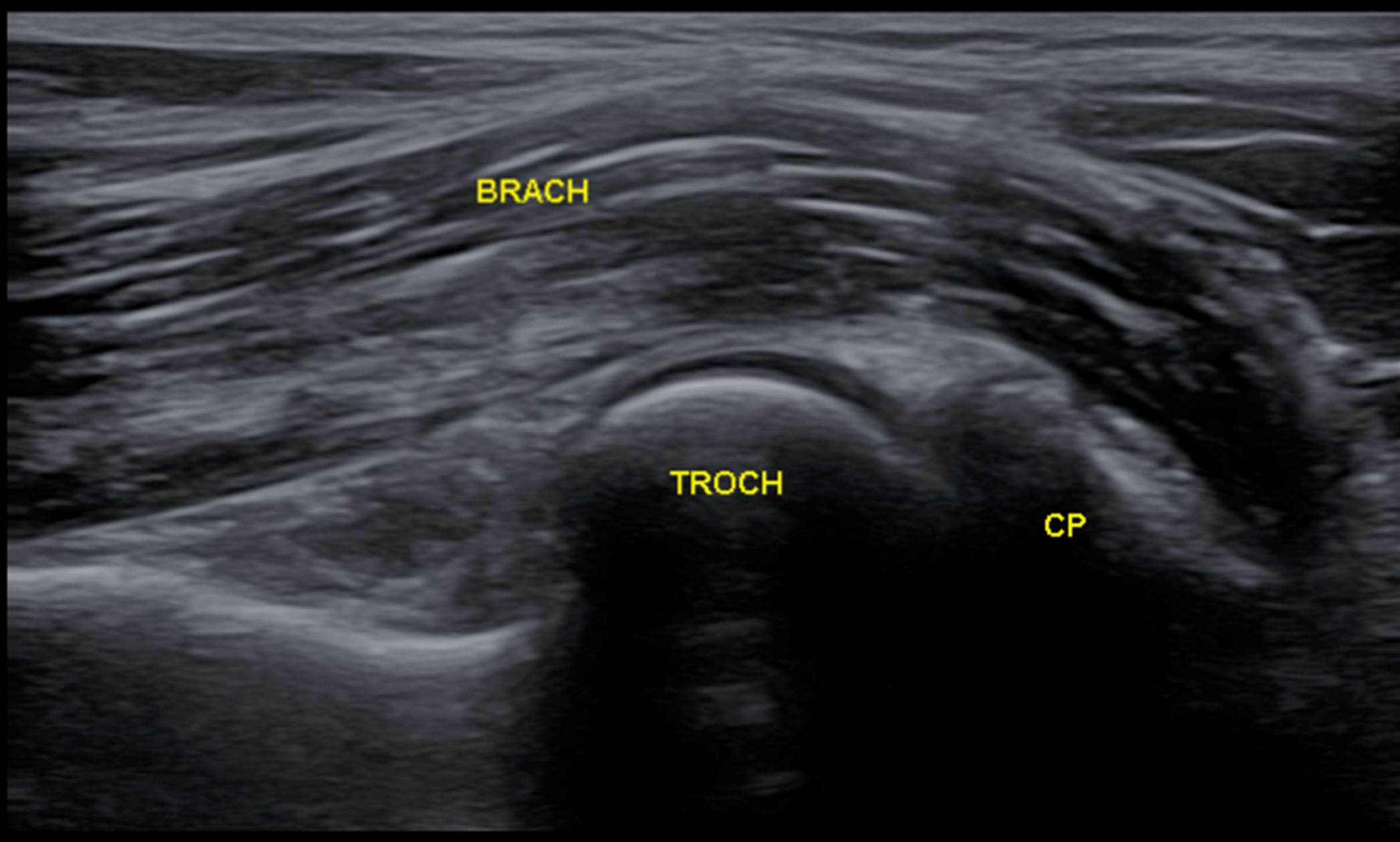






* CARTILAGE

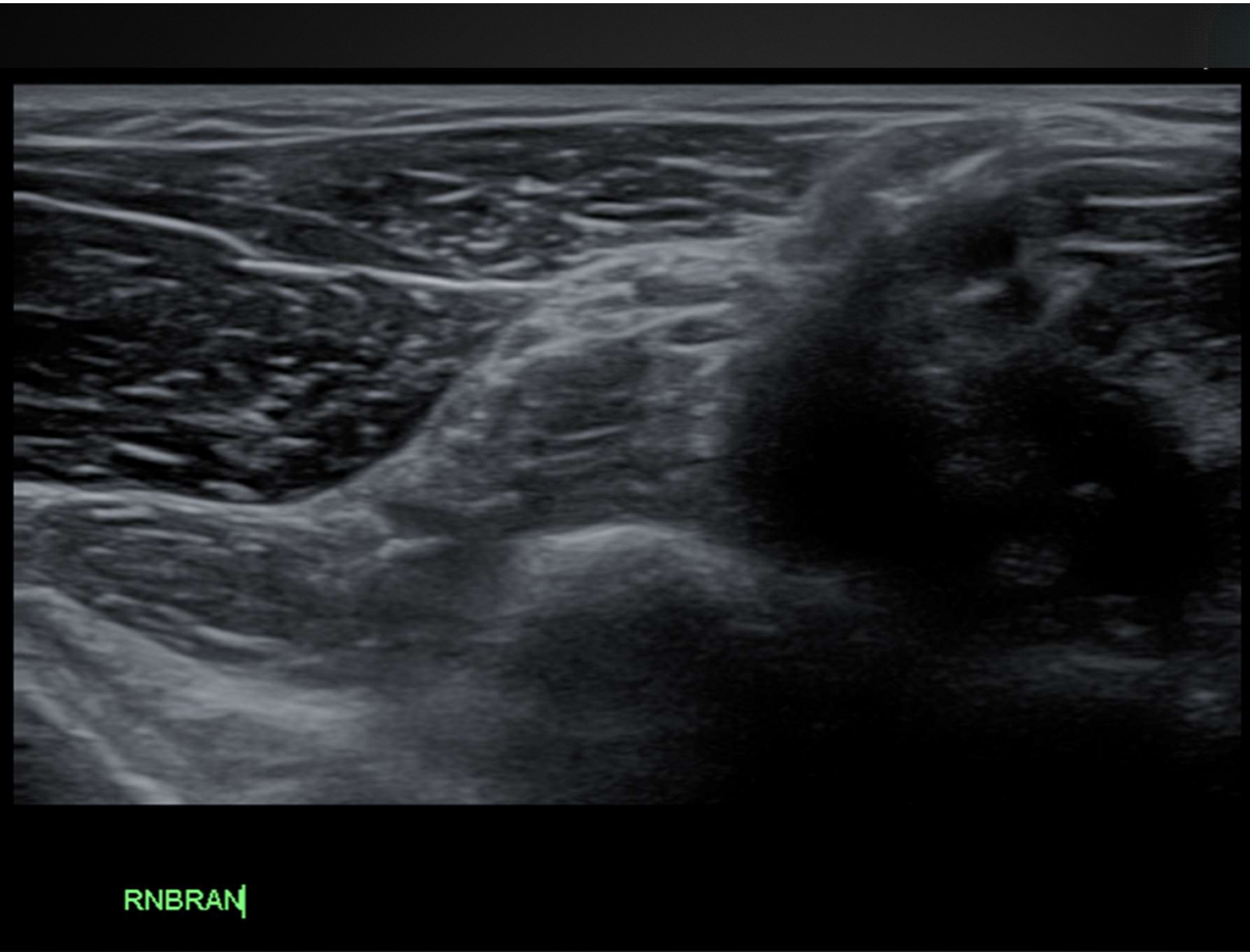




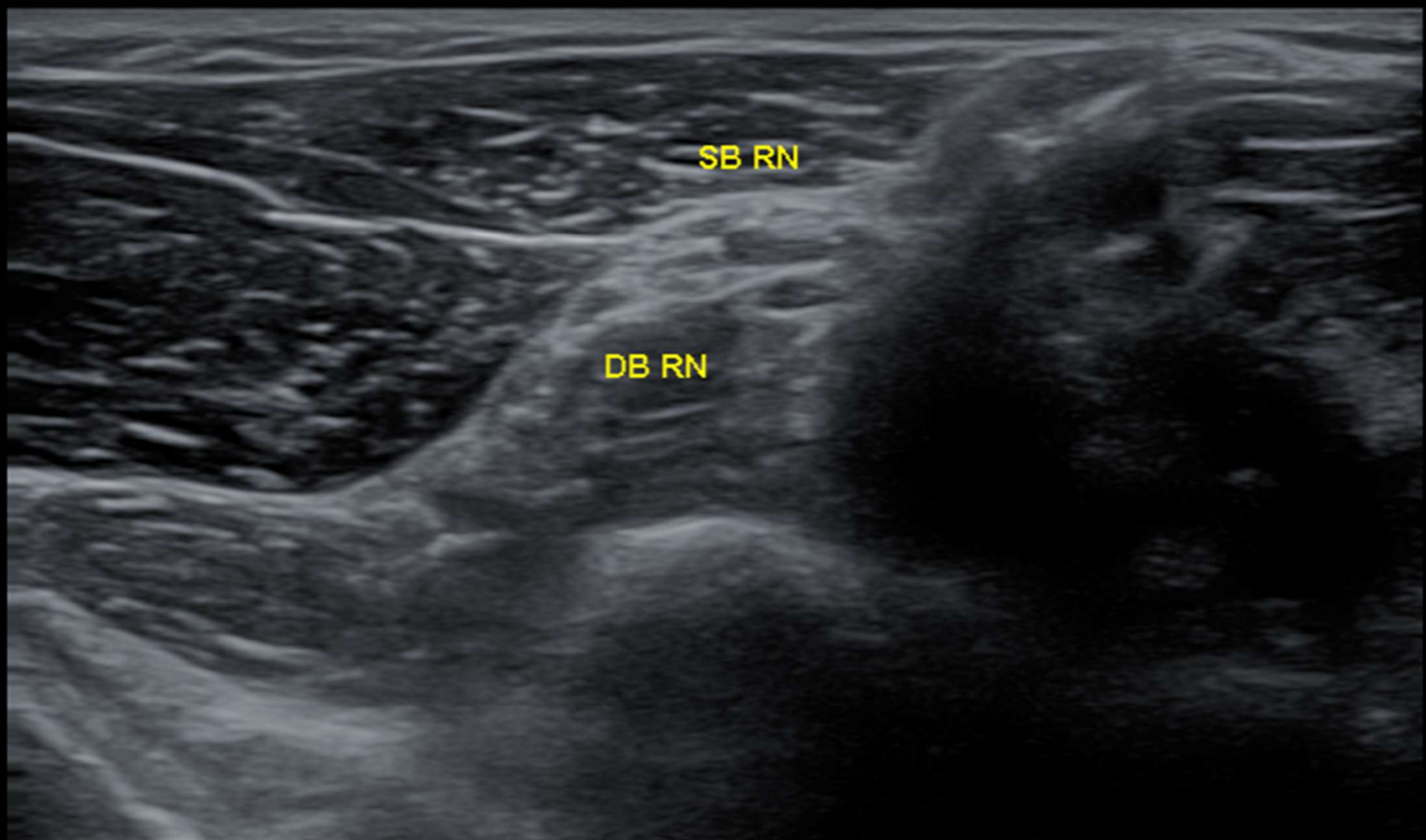
BRACH

TROCH

CP



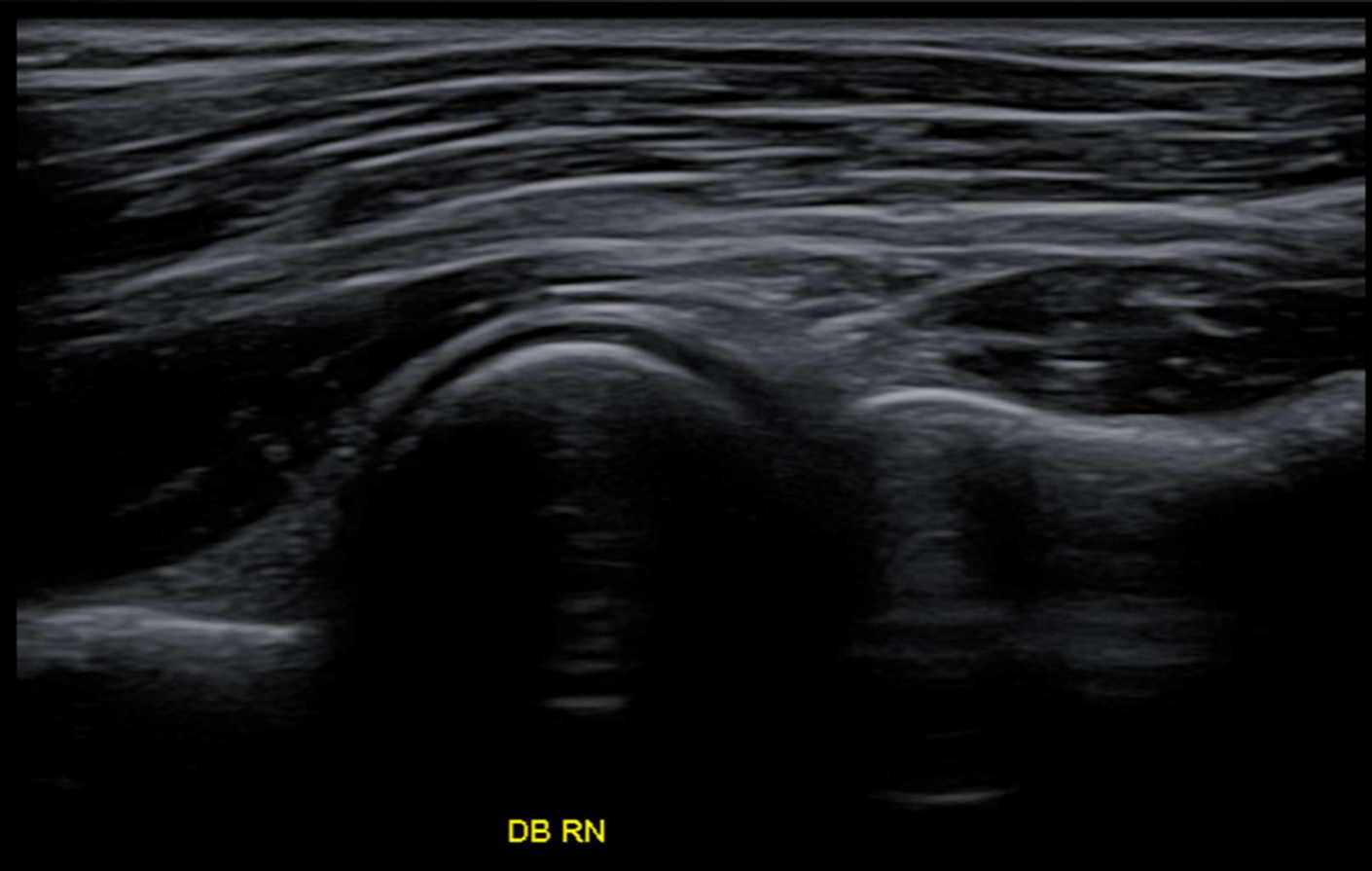
RNBRAN

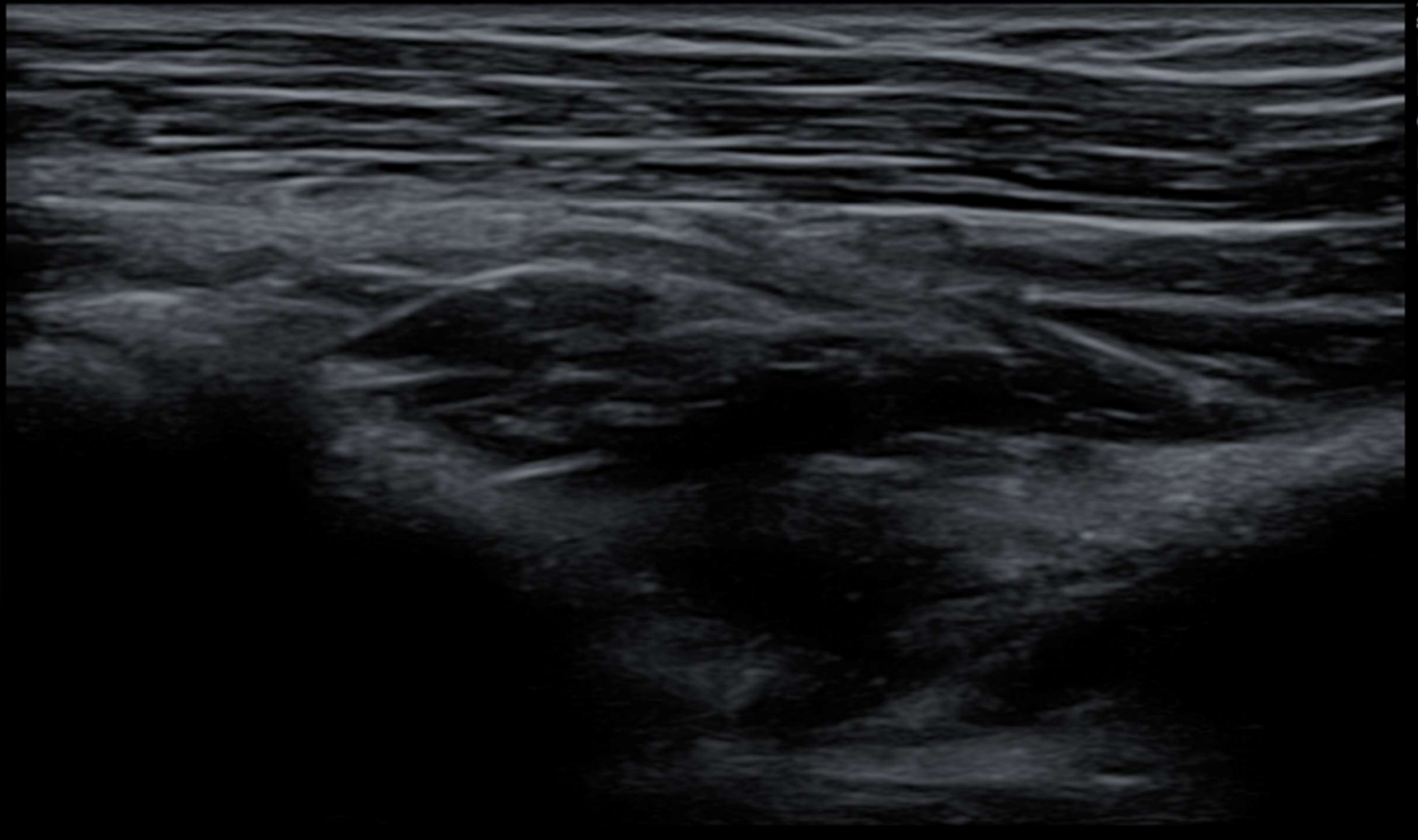


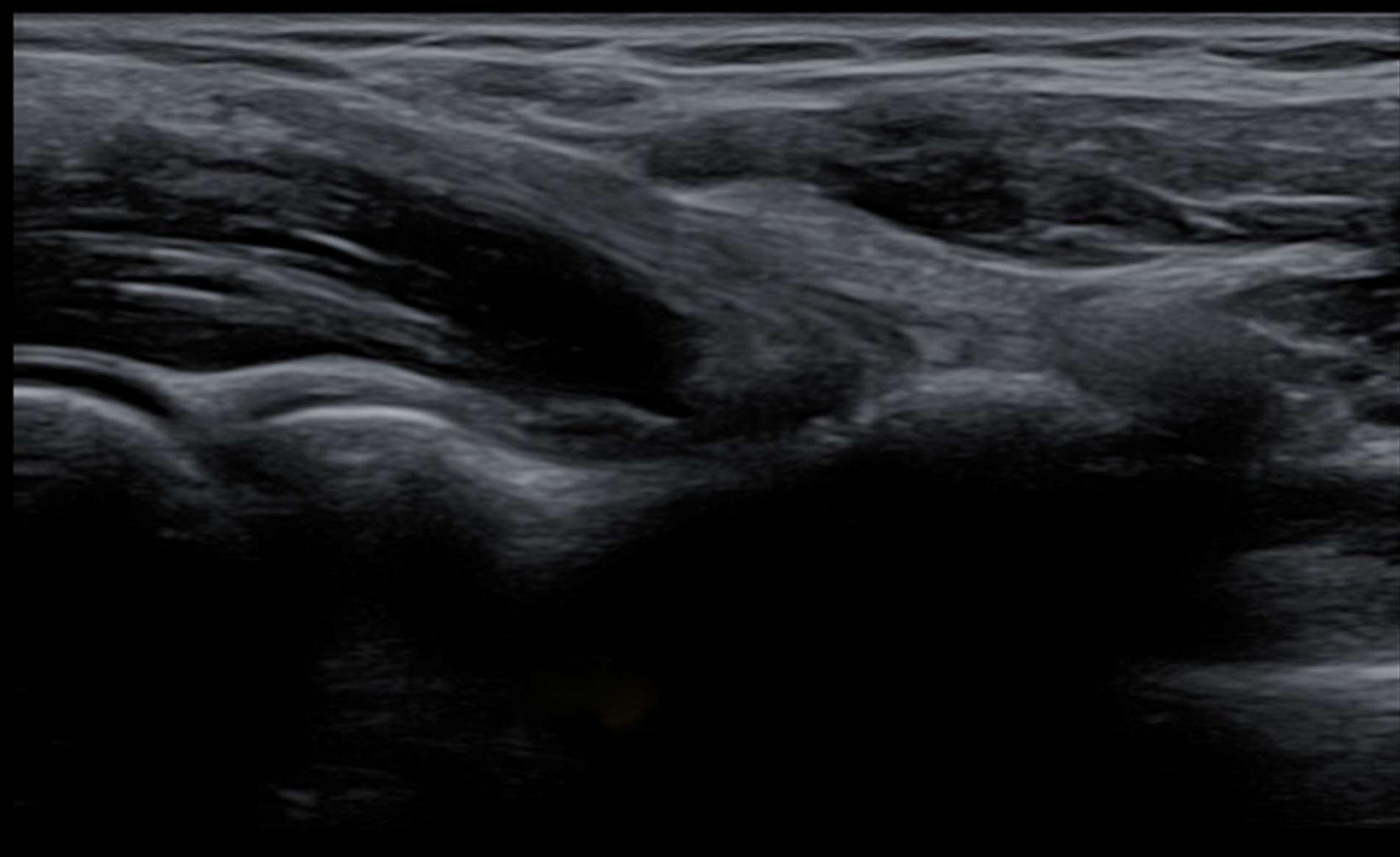
SB RN

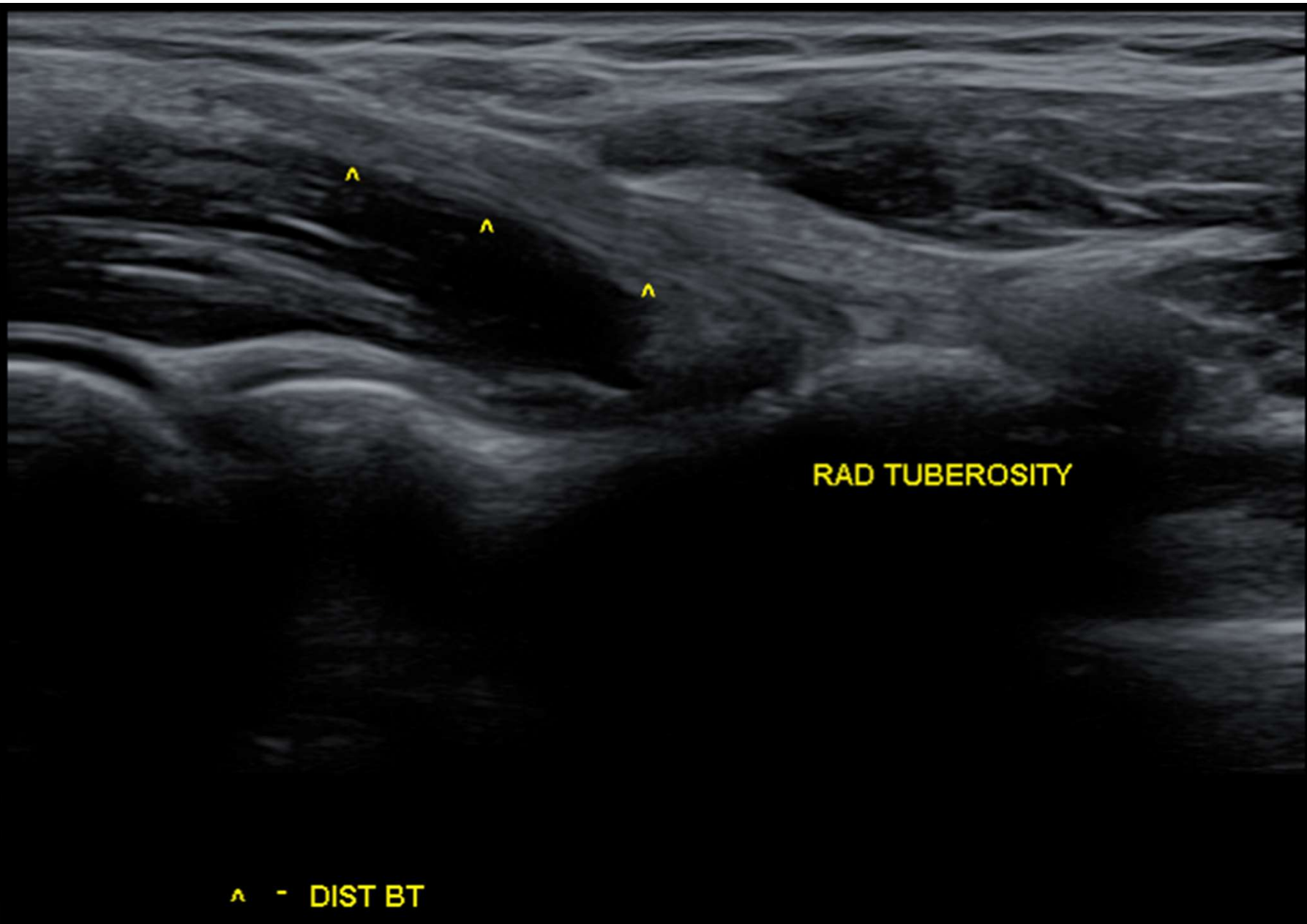
DB RN

RNBRAN



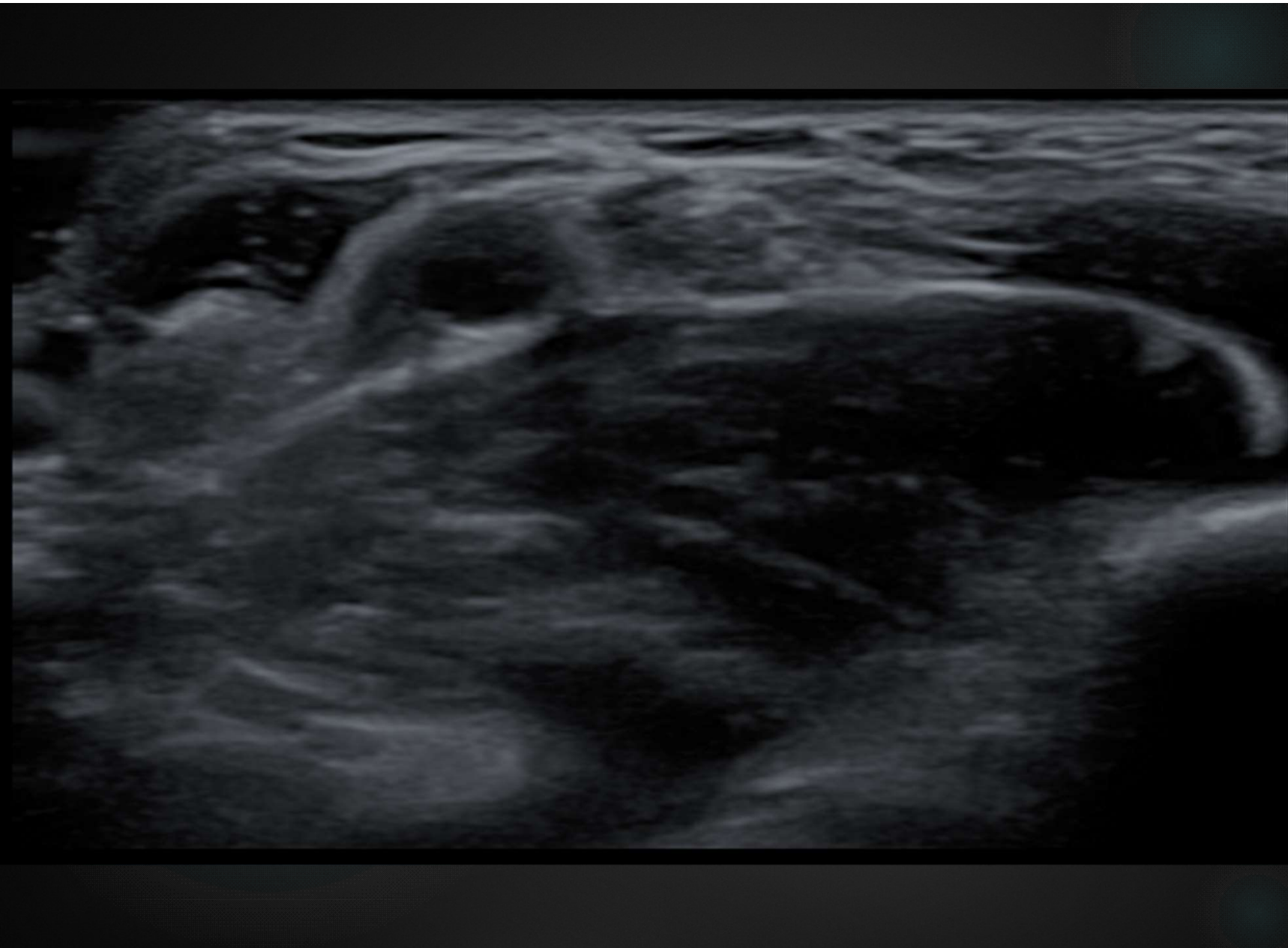


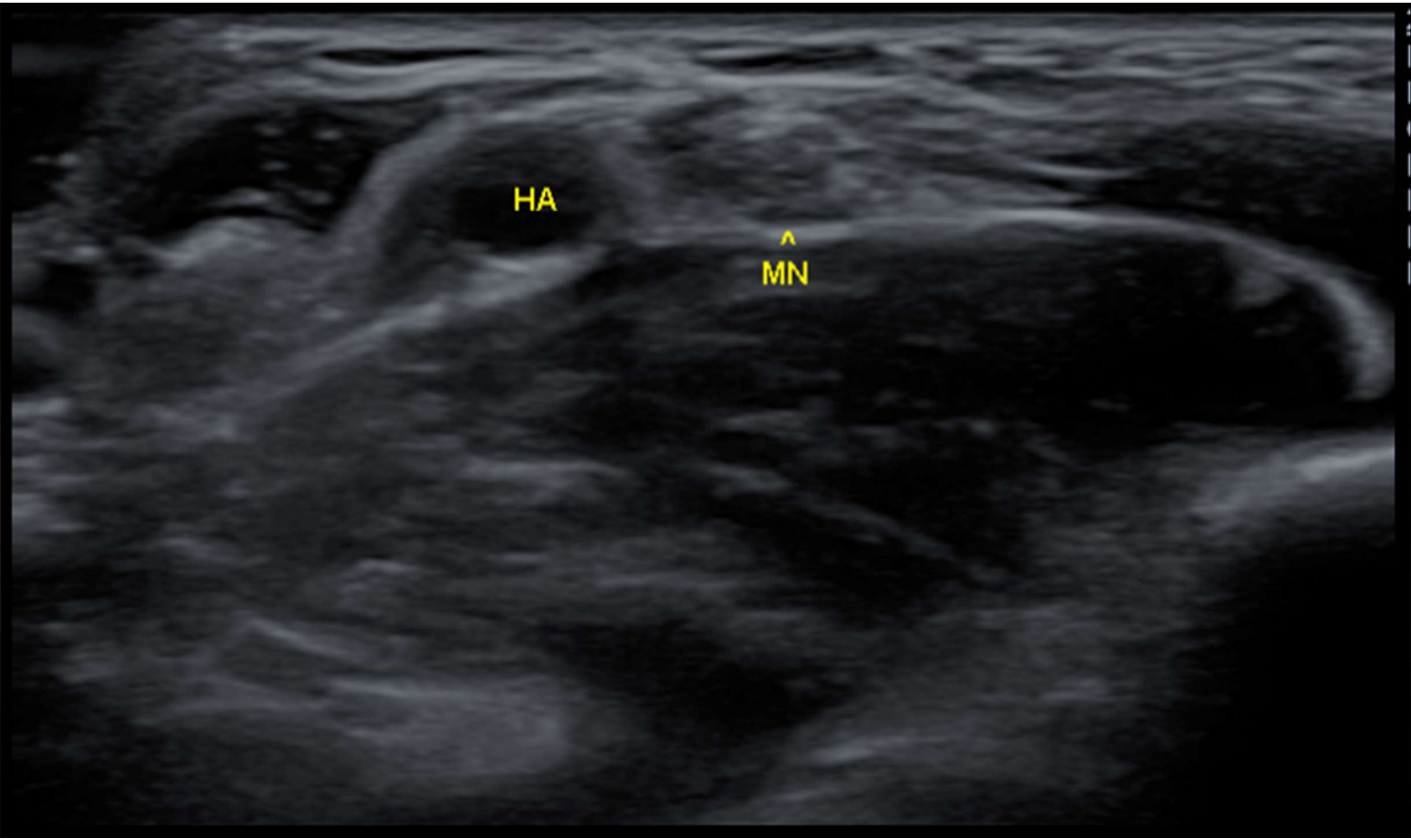


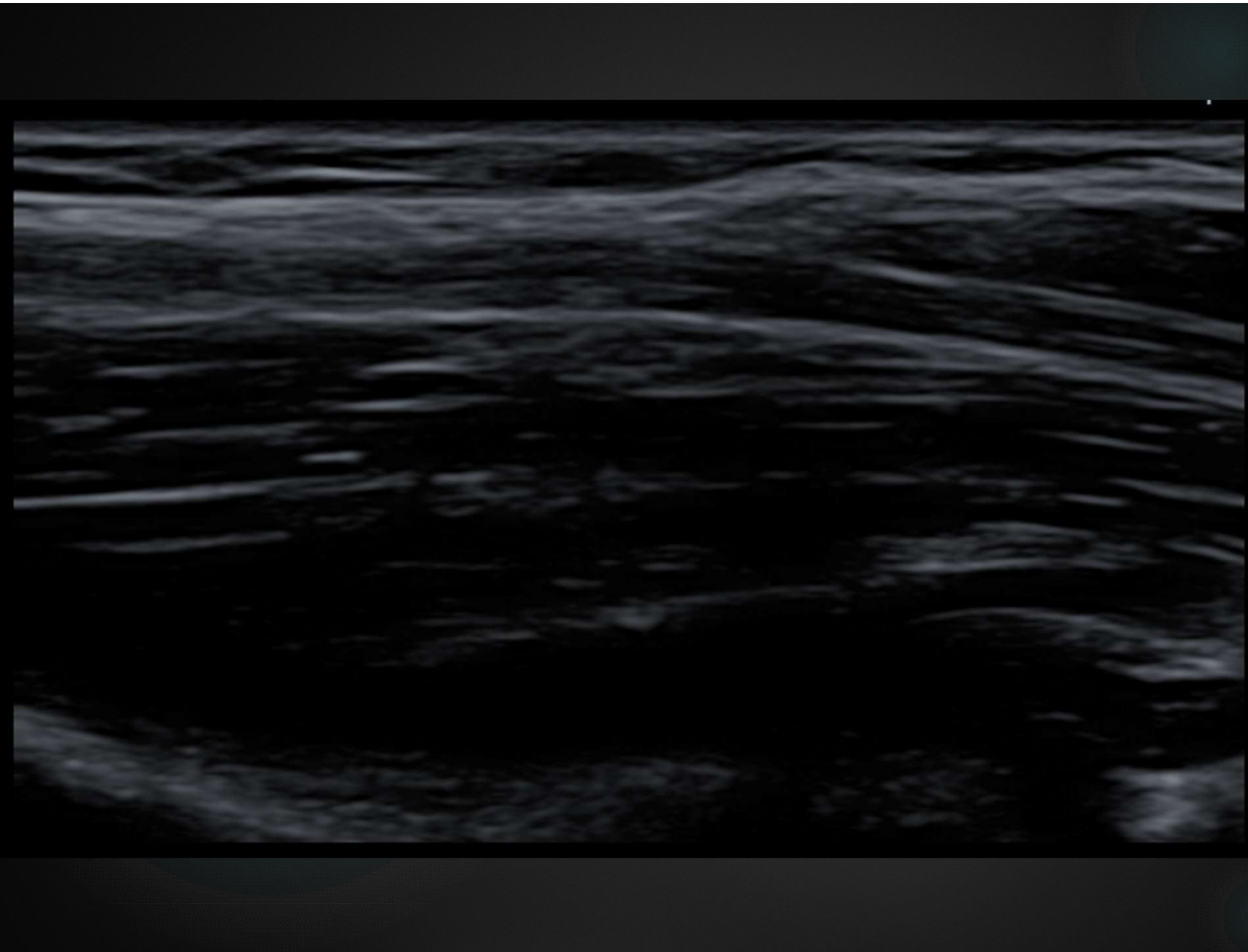


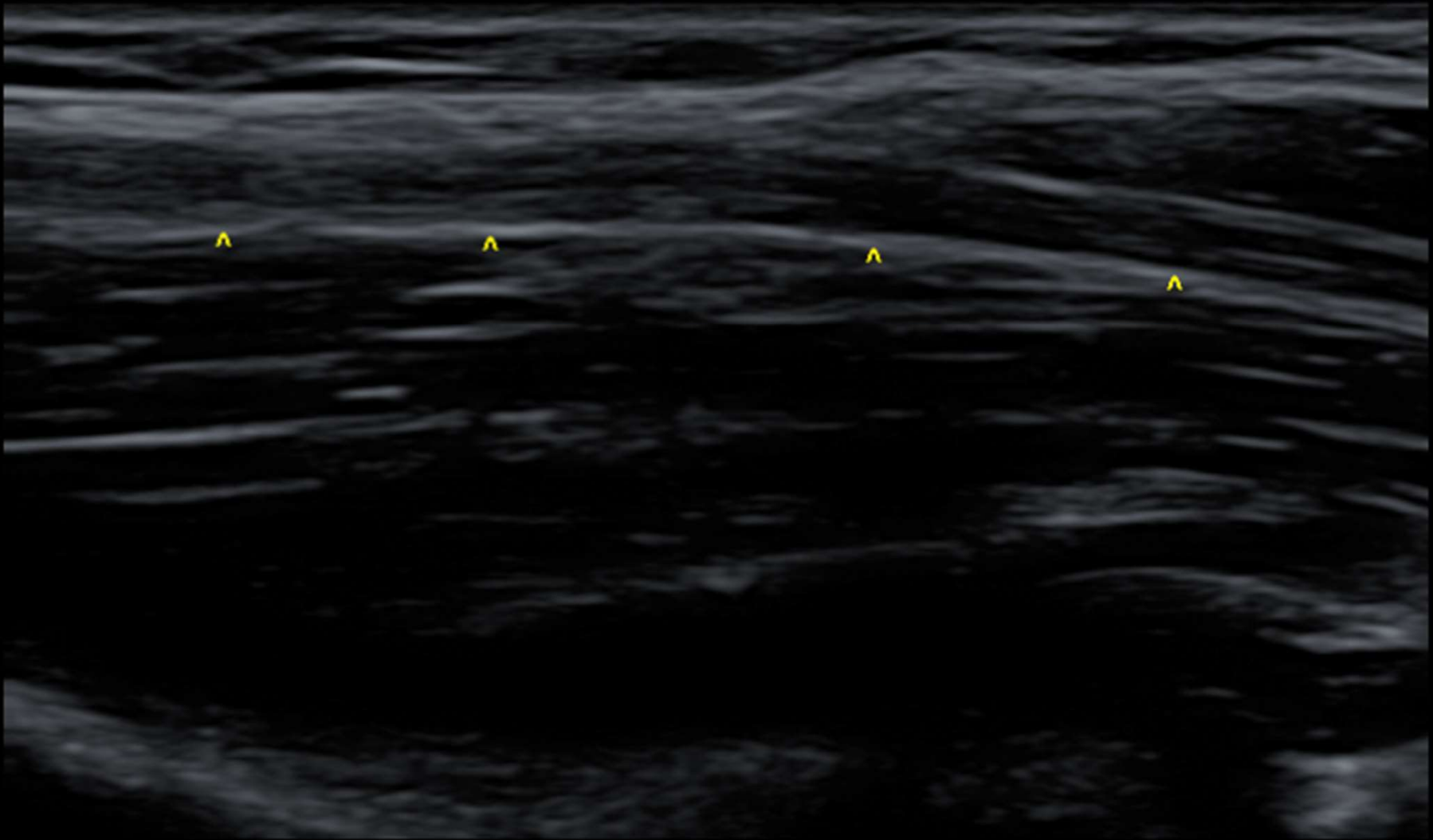
RAD TUBEROSITY

^ - DIST BT

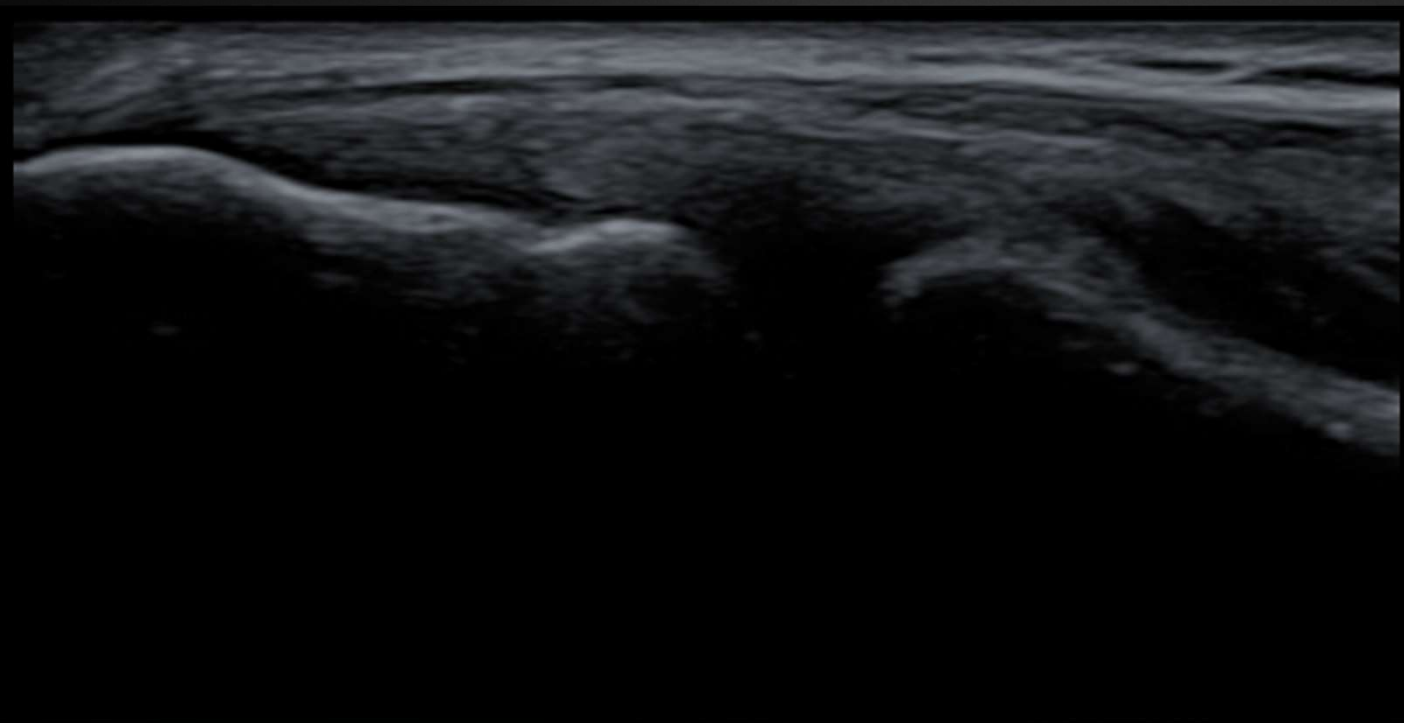


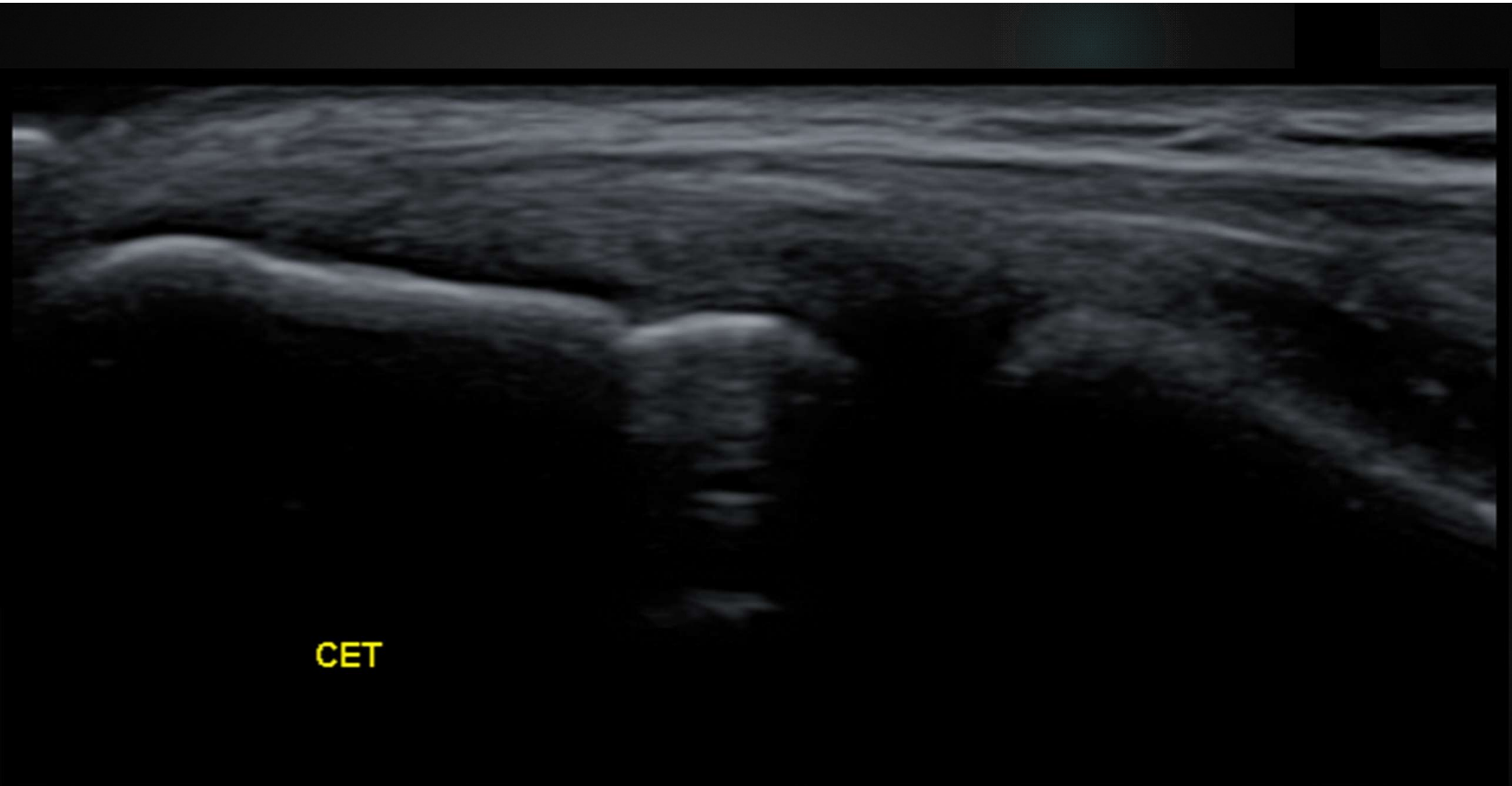




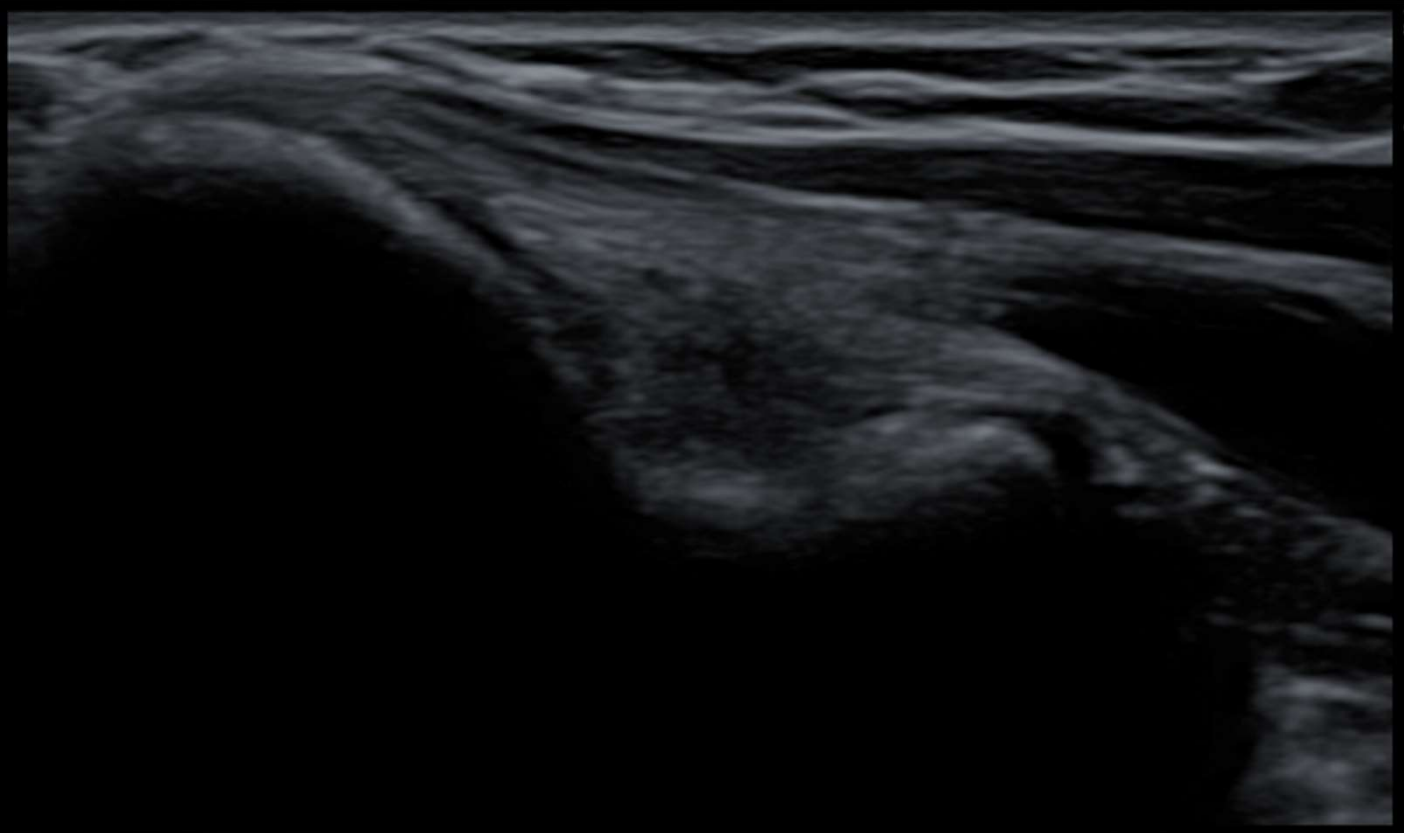


^ - MN LONG





CET



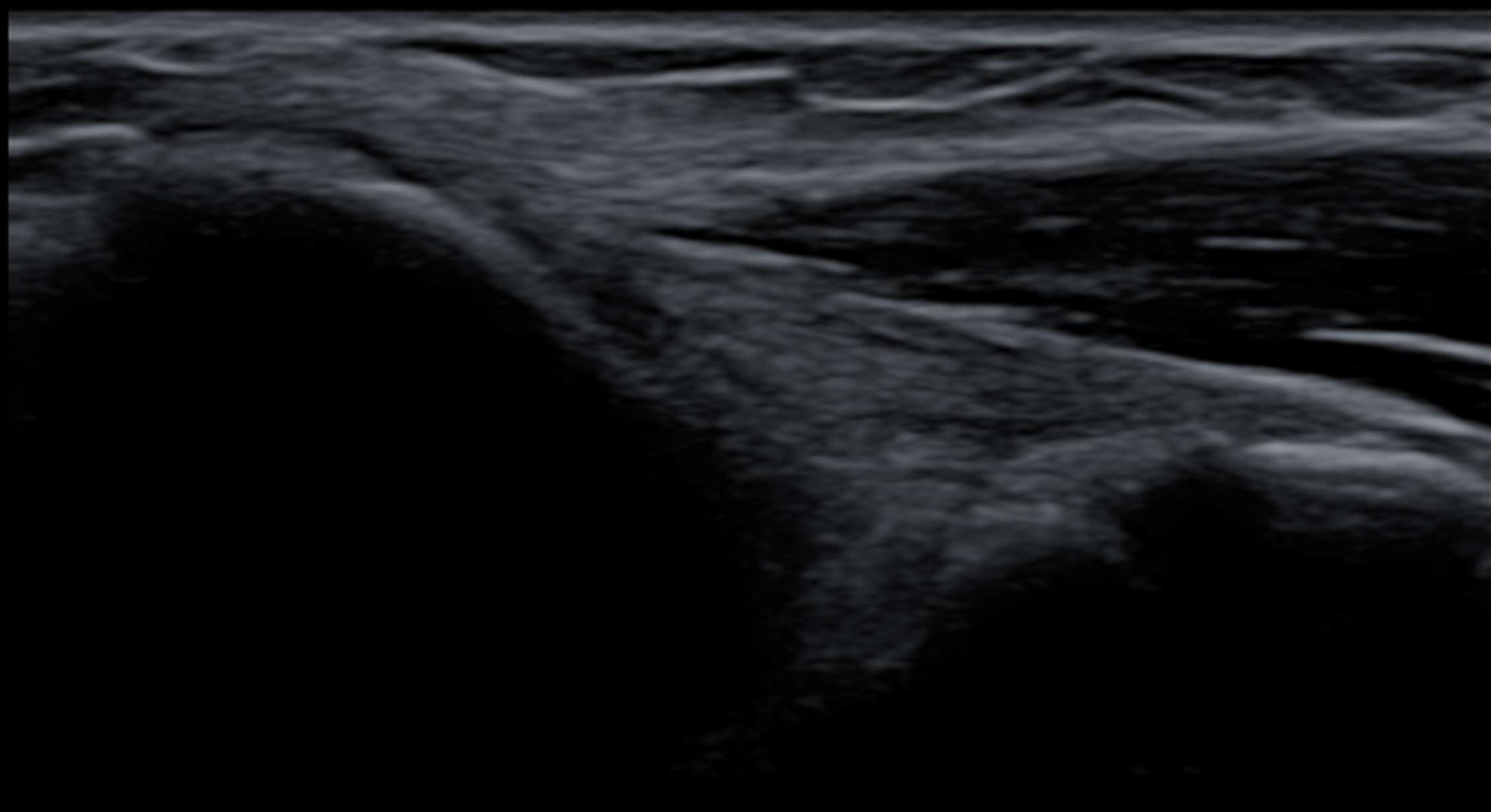


CFT

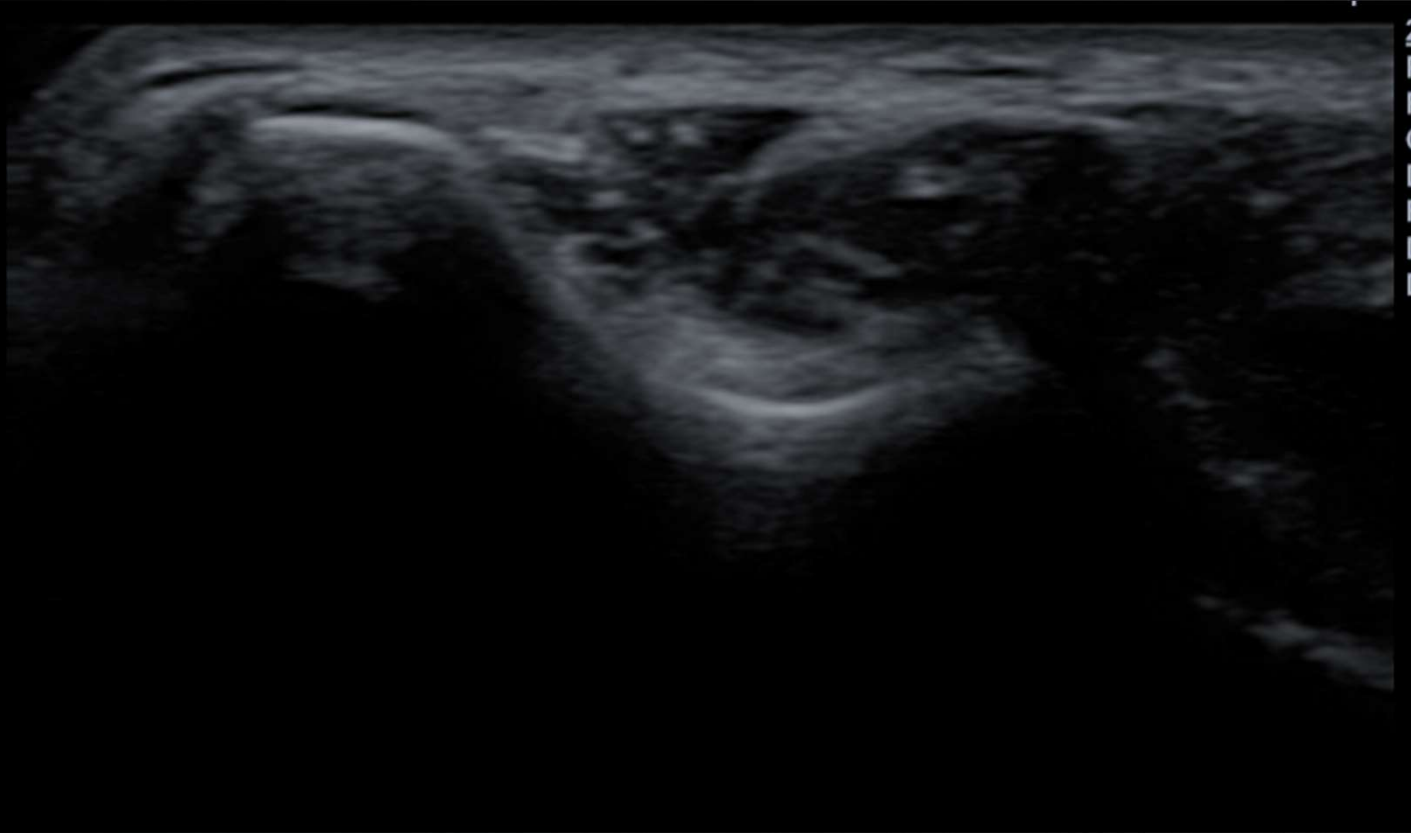
This is a longitudinal B-mode ultrasound image of a blood vessel. The vessel lumen is on the left, and the vessel wall is on the right. A bright, fibrous structure is visible within the vessel wall, labeled 'CFT' (Calcified Fibrous Tissue). The surrounding vessel wall shows a typical layered structure with varying echogenicity.

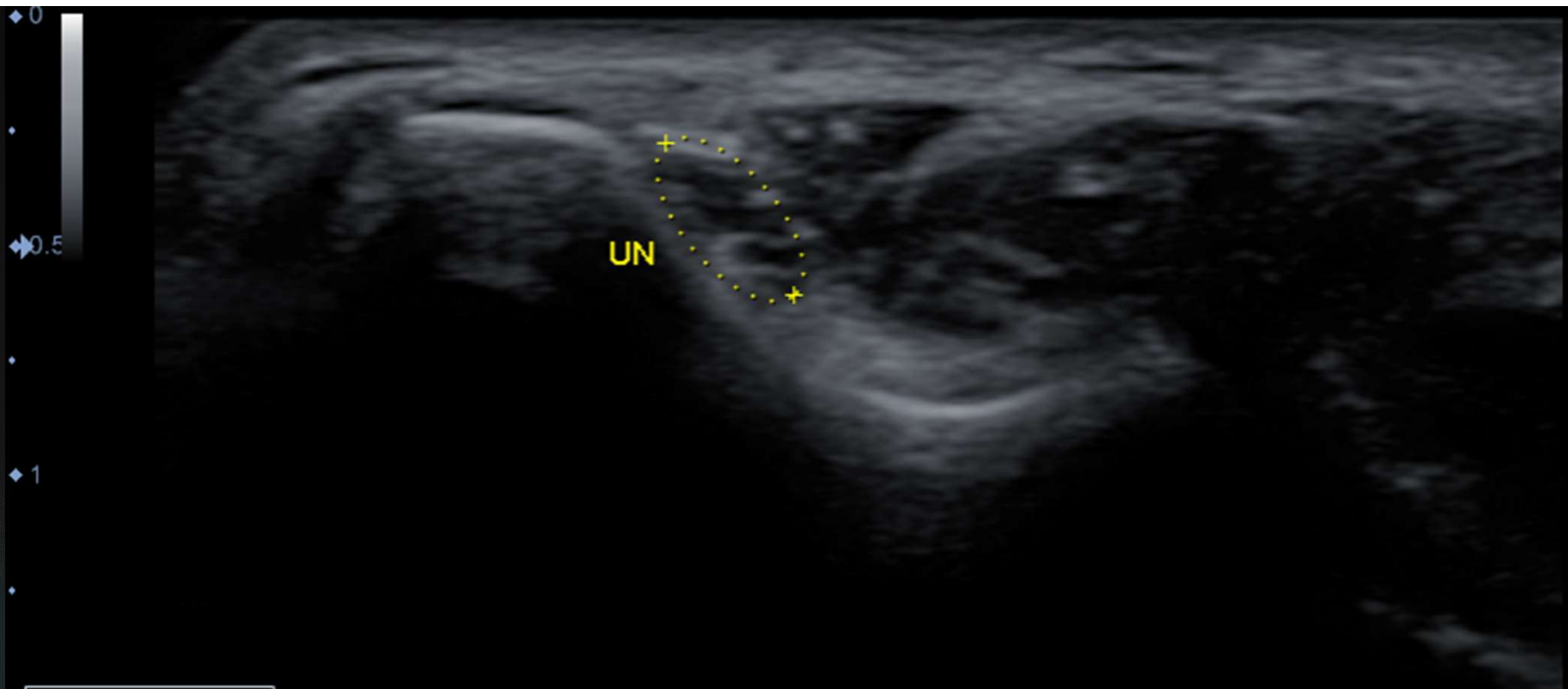


Super



MEDIAL COLLATERAL HUMERO-ULNAR LIGAMENT



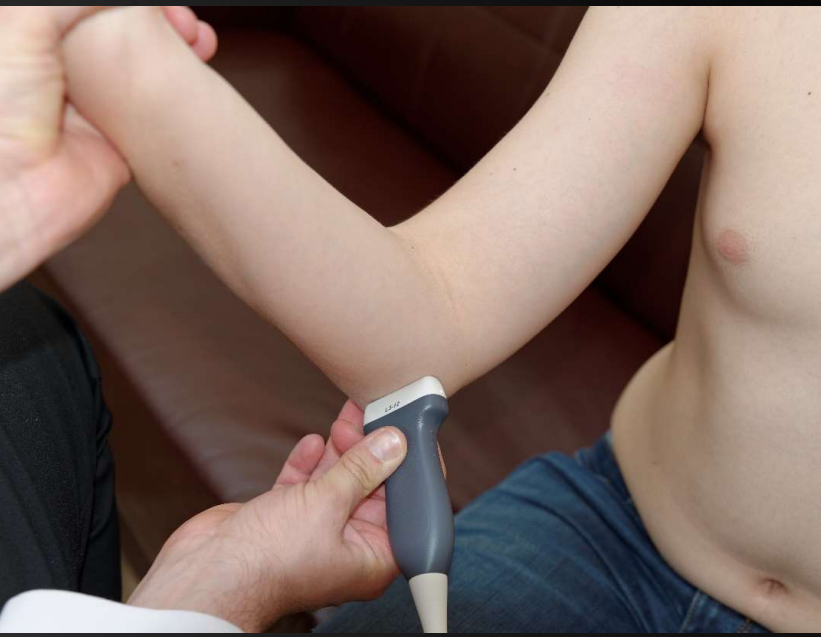
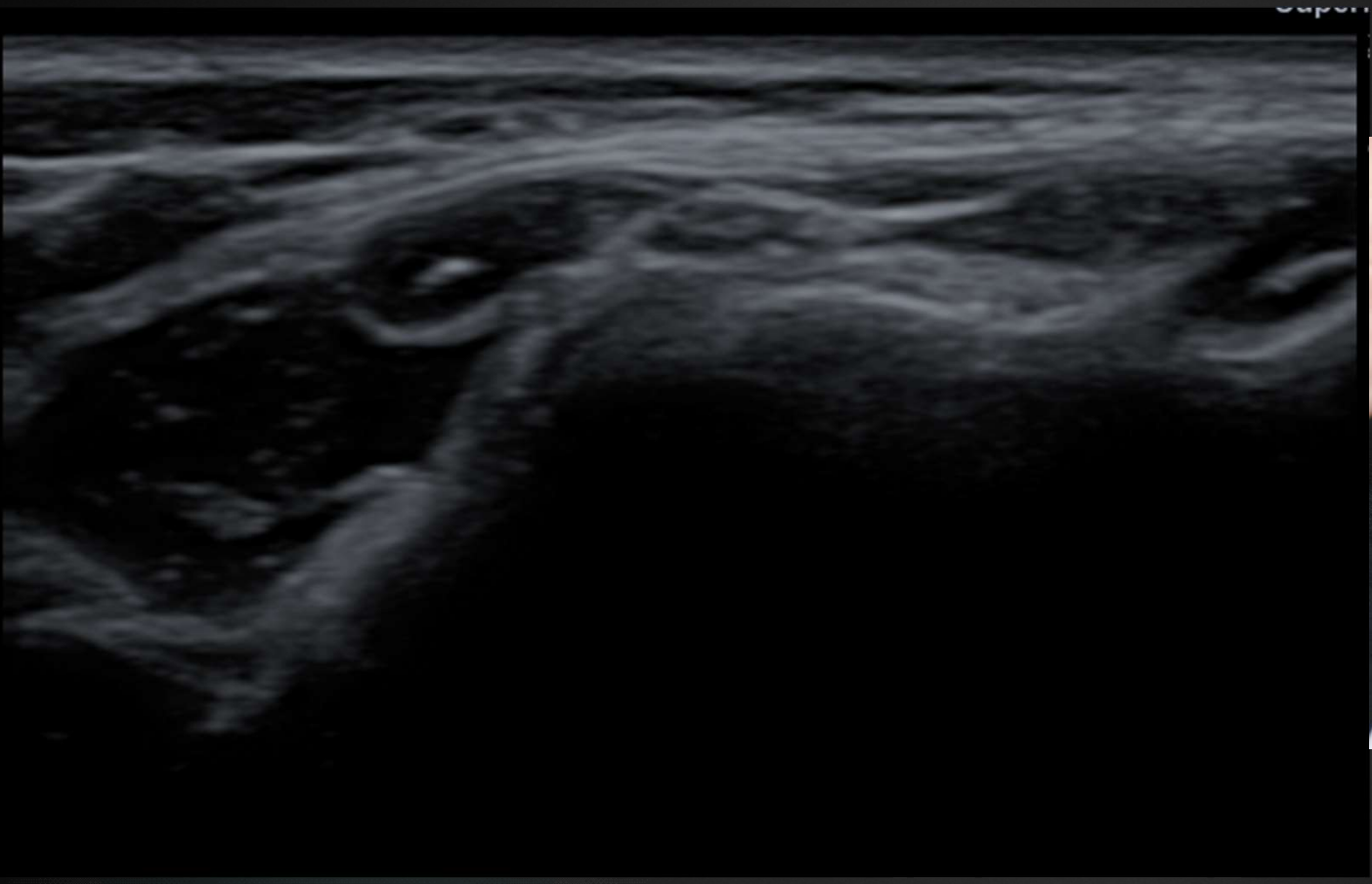


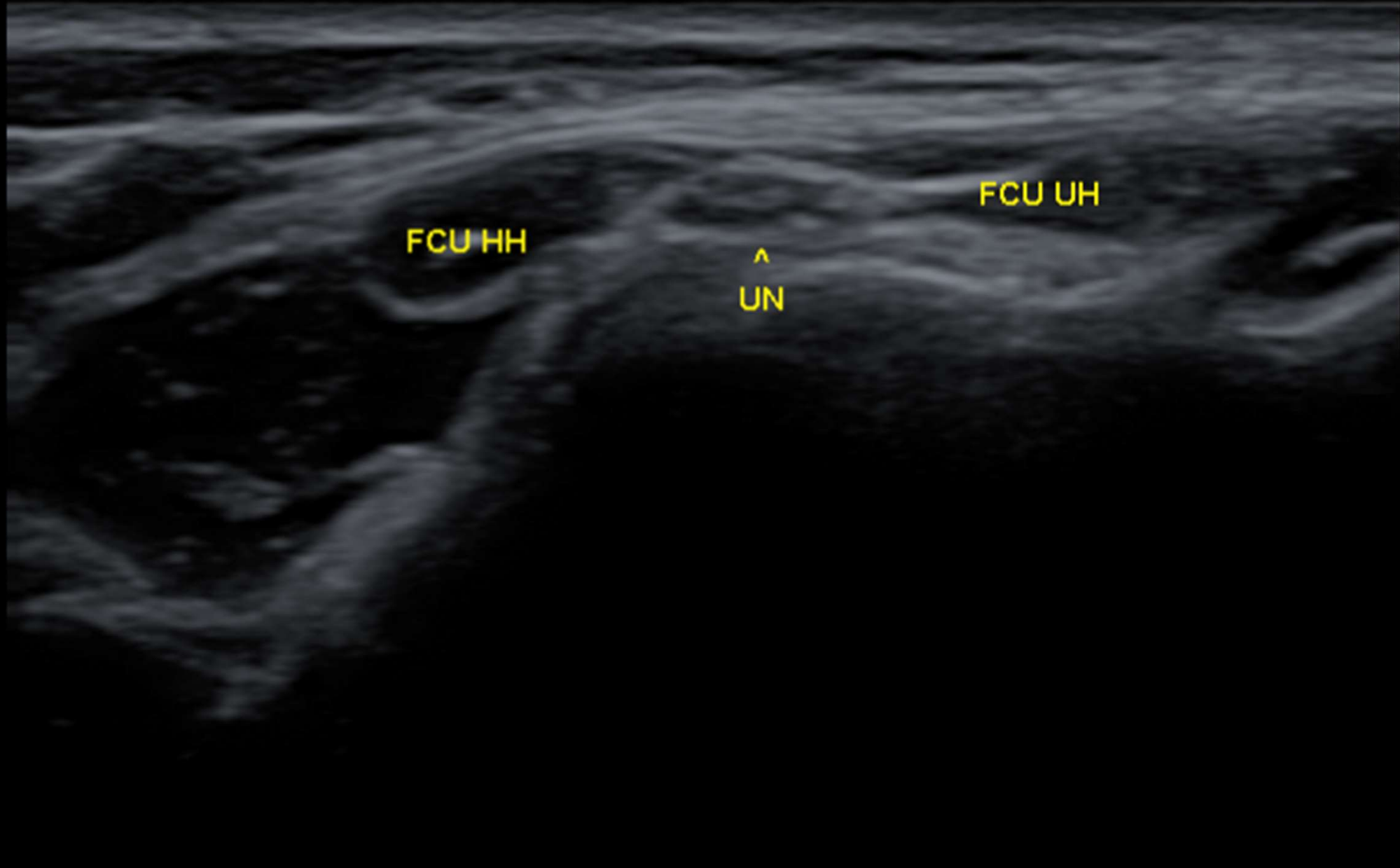
田 + ▶	
+ D1	0.43 cm
D2	0.21 cm
C	1.06 cm
A	0.07 cm ²
× d	1.09 cm
D1	0.00 cm
D2	0.00 cm
C	0.00 cm
A	0.00 cm ²



UN

This is a longitudinal B-mode ultrasound image of a blood vessel. The vessel lumen is the dark, anechoic region on the left. The vessel wall is visible on the right. A yellow label 'UN' is positioned in the middle of the vessel wall, pointing to a specific area of interest. The vessel lumen is on the left, and the vessel wall is on the right. The label 'UN' is located in the middle of the vessel wall, pointing to a specific area of interest.

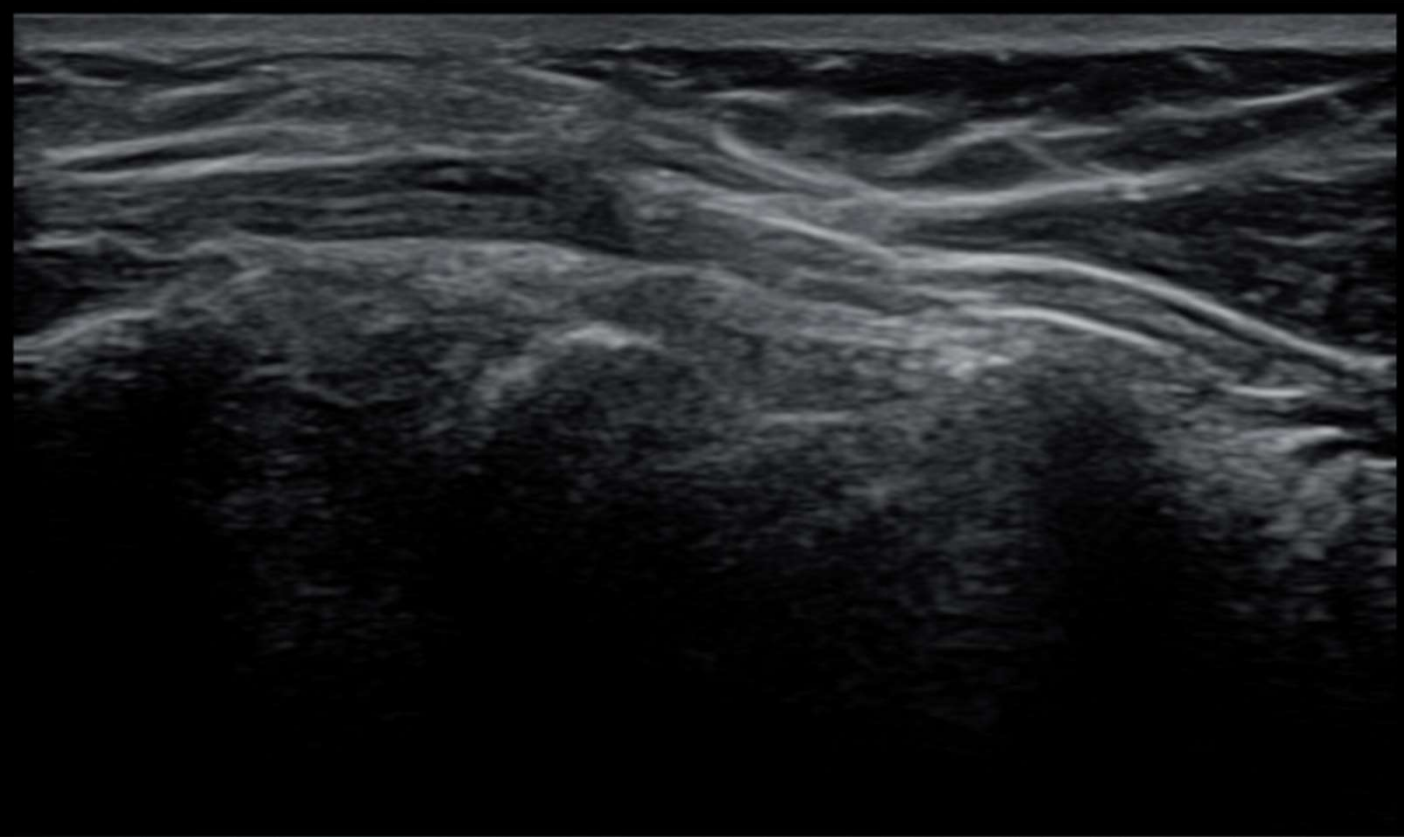


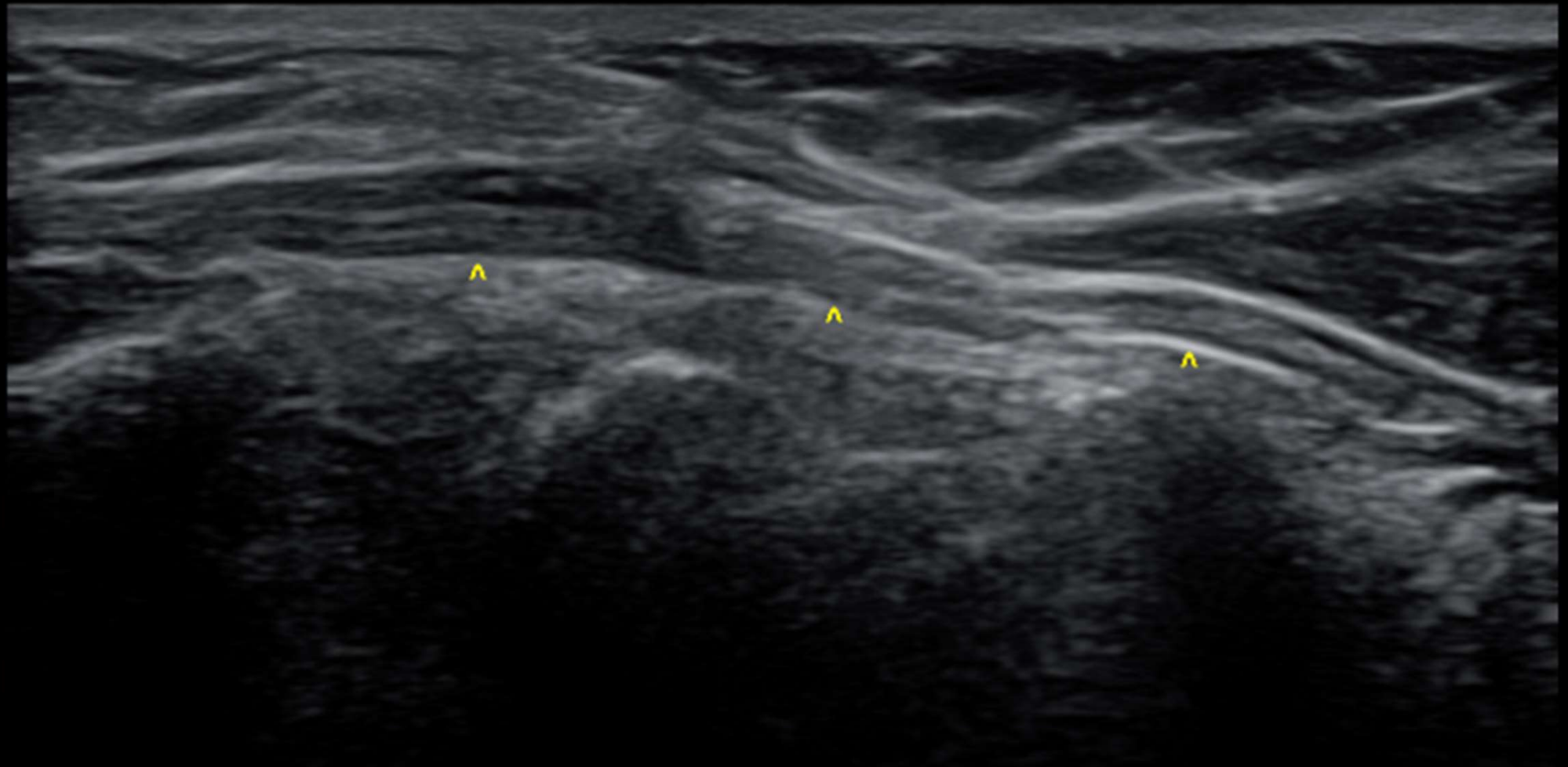


FCU HH

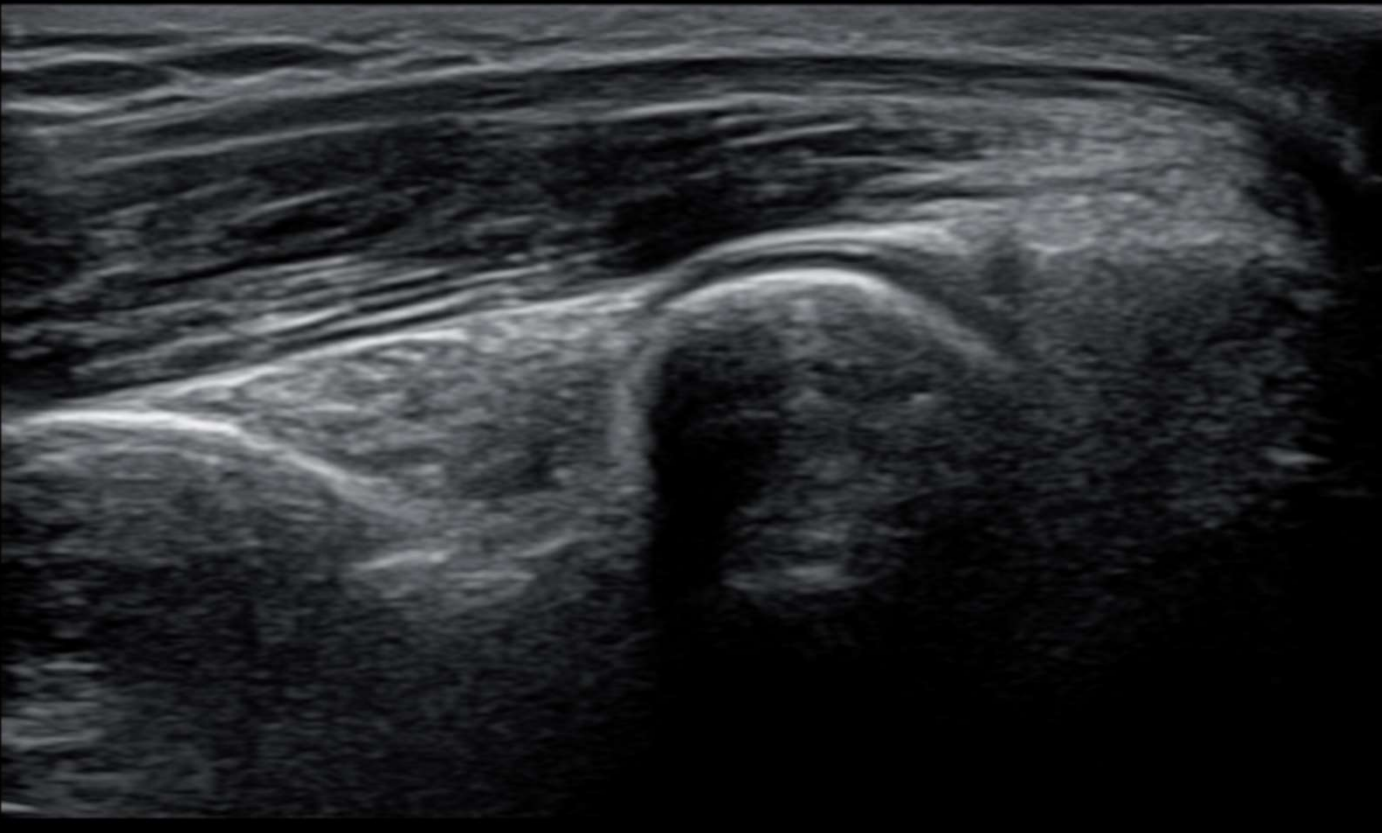
^
UN

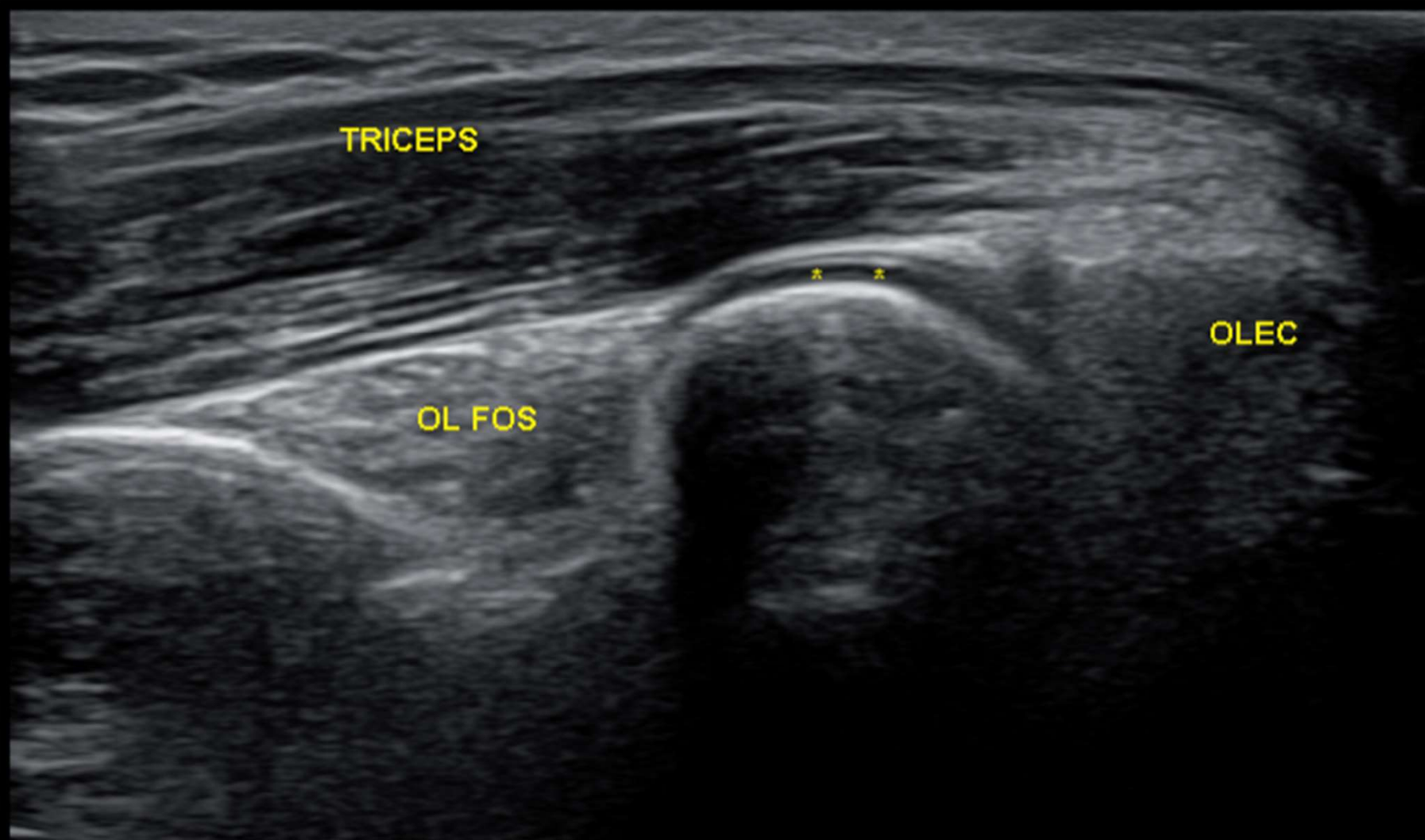
FCU UH





UN LONG





* - CARTI

